

### PRODUCT CODE

WSM-63

### PRODUCT DESCRIPTION

Warmup's very own WSM-63 panel is a versatile panel to switch loads from Snow Melting and Roof De-icing applications. It can be used by itself with the integrated timer module or connected to a third-party sensor mounted outside.

### ADVANTAGES

- Operate as Timer panel without sensor
- Connects to third-party sensors
- On/Off indicator on enclosure
- Timer trigger on enclosure door
- Suitable for 120-208-240-277-347-480 volts applications

### SPECIFICATIONS

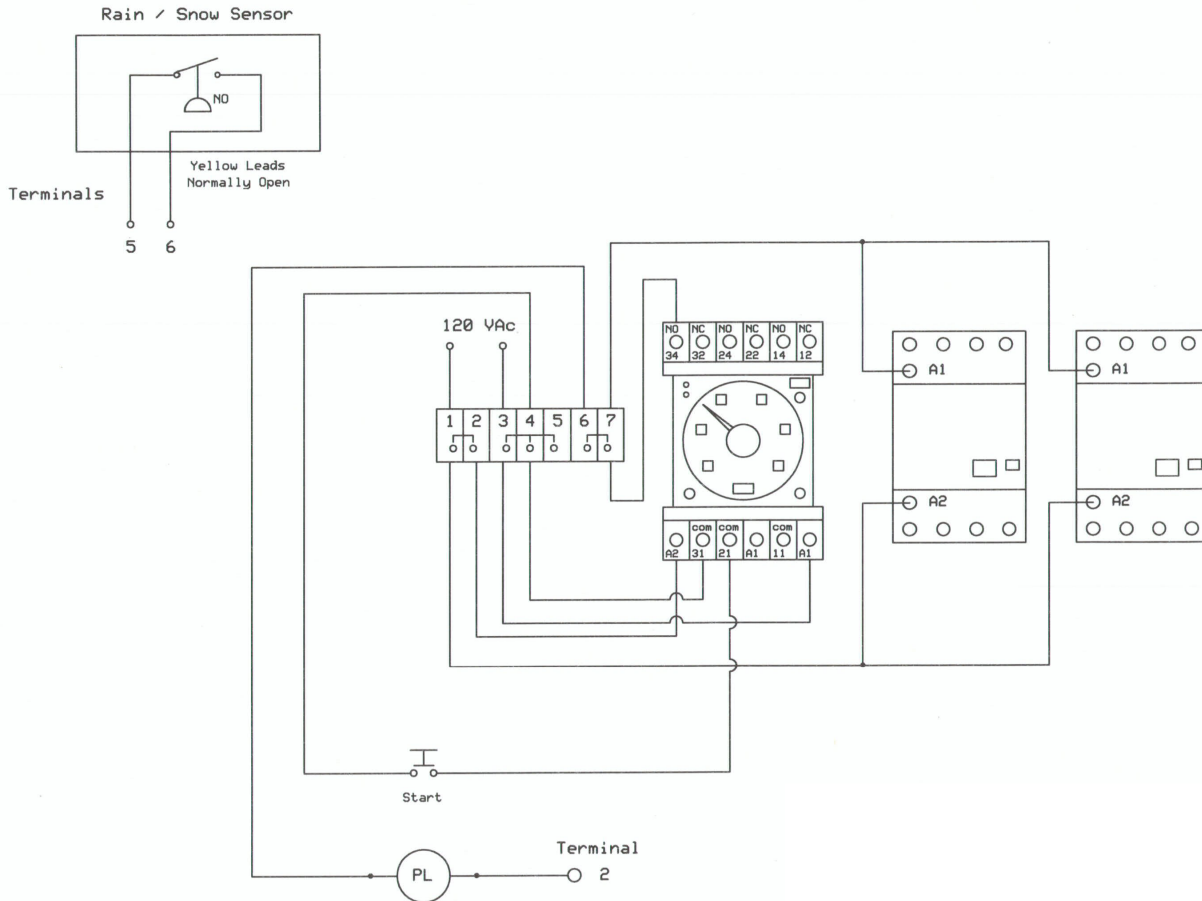
Enclosure	NEMA 1
Relay	2 x 63A/4-pole relay contactor 100-600V relay voltage
Sensor	120V coil for sensor connections
Amps capacity	Total capacity of 252 Amps at 240V/2-phase Total Capacity of 378 Amps at 277V/3-phase
Approval	UL-approved components

### APPLICATION

Operate	WSM/WSMM snow melting installations outdoors
	WODH in-slab applications indoors
	NAMSR cables on pipes and roofs



### INSTALLATION DIAGRAM



### WARRANTY & MAINTENANCE

When installed according to the installation manual, the WSM-63 are covered with Warmup's 1-year manufacturer warranty.

### TECHNICAL SUPPORT

Warmup is available 24/7/365 at (888) 927-6333.

For quotes, layouts and specific technical information, contact us at:

Warmup USA  
(888) 927-6333  
us@warmup.com

Warmup CANADA  
(888) 592-7687  
ca@warmup.com

### RELATED PRODUCTS

- WSM | WSMM Snow Melting Cable and Mat - see WSC-0726 & WSC-0729
- WODH In-slab Cable - see WSC-0723
- NAMS Self-Regulating Cable for Roof - see WSC-0929
- NAMS Self-Regulating Cable for Pipe - see WSC-0930
- DS2-C Controller - see WSC-0809